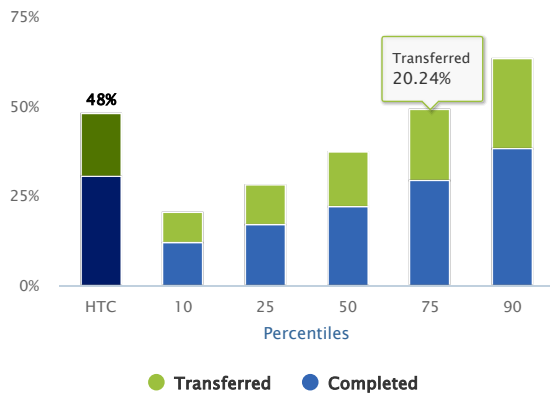


Executive Report for Dr. Merrill Irving, Jr.  
**HENNEPIN TECHNICAL COLLEGE**

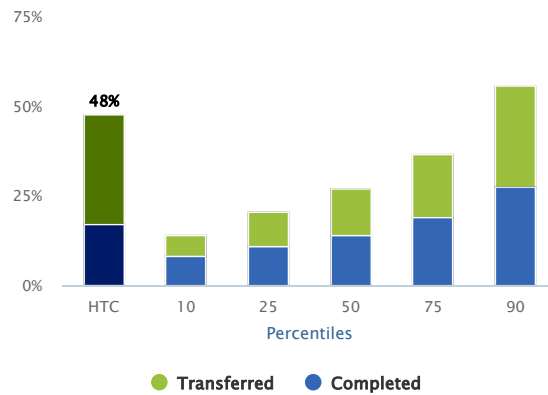
**Key National Benchmarks – Where Does Your Institution Stand?**

Thank you for participating in the National Community College Benchmark Project in 2017. The report illustrates how your college compared to national data, representing 242 community colleges. The full NCCBP report, available online, contains more than 150 benchmarks, which support our members in their planning, assessment and strategic decision-making activities.

**Full-time Students Completed or Transferred in Three Years**



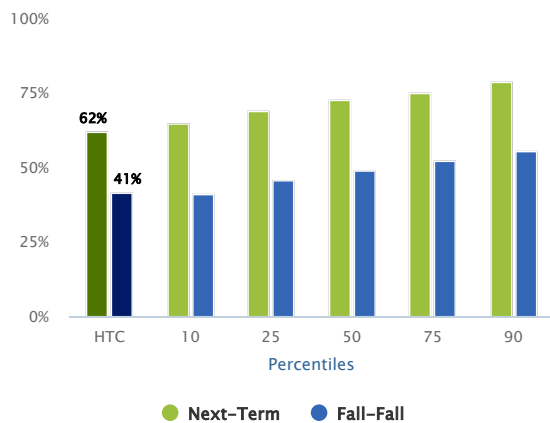
**Part-time Students Completed or Transferred in Six Years**



The percent of students out of the unduplicated full-time, first-time, credit headcount from Fall 2013 IPEDS GRS cohort who either completed a degree or certificate before fall 2016 or who transferred to four-year institutions before fall 2016.

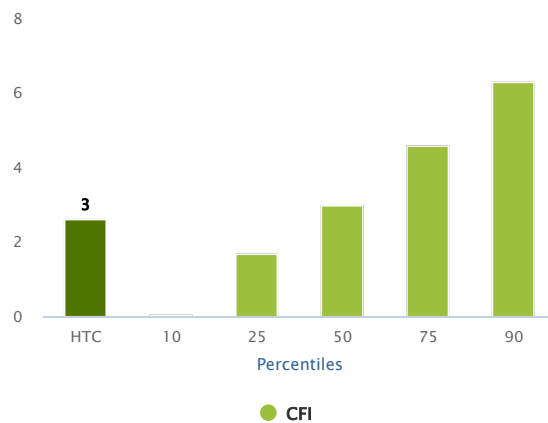
The percent of part-time students out of the unduplicated part-time, first-time, credit headcount from Fall 2011 IPEDS GRS cohort who either completed a degree or certificate before fall 2016 or who transferred to four-year institutions before fall 2016.

**Persistence Rate**



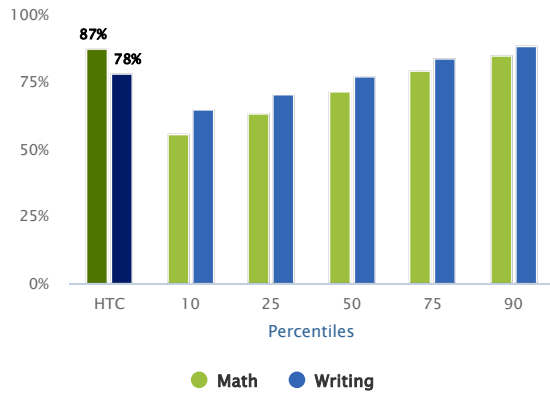
The persistence rate is the percent of Fall 2015 credit students, both full- and part-time, who return to the campus for the next term (usually Spring 2016), or for the next fall term (Fall 2016). This metric excludes students who graduated or completed certificates in the time frame.

**Composite Financial Indicator**



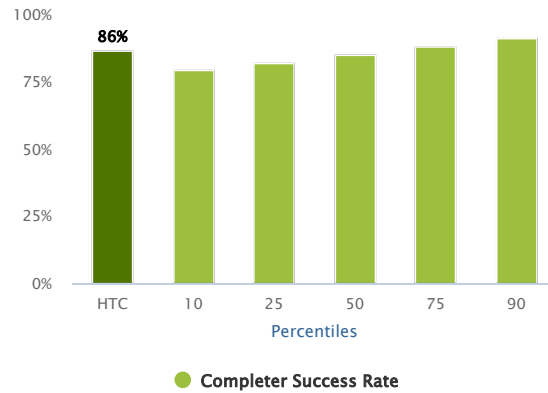
The Composite Financial Index is a weighed score of the primary reserve ratio, net income ratio, return on net assets ratio and the viability ratio. Source: Strategic Financial Analysis for Higher Education: Identifying, Measuring & Reporting Financial Risks (Seventh Edition), by KPMG LLP; Prager, Sealy & Co., LLC; Attain LLC.

## Developmental Completer Success Rate



The percent of students, institution-wide, who received grades of A, B, C, or Pass in developmental/remedial math and writing courses in fall 2015.

## College-level Courses: Completer Success Rate



The percent of students, institution-wide, who received grades of A, B, C, or Pass in college-level credit courses in fall 2015.

### Strengths

The following benchmarks are where your community college performed at its best. The benchmark is followed by the percent rank for your institution.

1. % of Full-Time, First-Time Students that Completed in Two Years  
**Your Rank - 97<sup>th</sup> Percentile**
2. % of Students that Received a Passing Grade in Math Developmental/Remedial Courses of those that Completed the Course  
**Your Rank - 95<sup>th</sup> Percentile**
3. % Part-Time, First-Time Students that Transferred in Six Years  
**Your Rank - 93<sup>rd</sup> Percentile**
4. % of Full-Time, First-Time Students that Completed OR Transferred in Two Years  
**Your Rank - 93<sup>rd</sup> Percentile**

### Opportunities for Improvement

The following benchmarks are where your community college may need improvement. The benchmark is followed by the percent rank for your institution.

1. % of Cultural Activities Attendees (duplicated) from the Service Area Population  
**Your Rank - 2<sup>nd</sup> Percentile**
2. % of Public Meeting Attendees (duplicated) from the Service Area Population  
**Your Rank - 3<sup>rd</sup> Percentile**
3. Next-term Persistence Rate  
**Your Rank - 5<sup>th</sup> Percentile**
4. CCSSE Student Effort Benchmark Means  
**Your Rank - 6<sup>th</sup> Percentile**

### More Information

Find more information on the NCCBP by visiting our website [NCCBP.org](http://NCCBP.org) or by calling or emailing the Benchmark Institute.

Johnson County Community College  
12345 College Blvd.  
Overland Park, KS 66210  
913-469-3831  
E-mail: [michelletaylor@jccc.edu](mailto:michelletaylor@jccc.edu)  
Twitter: [@EdBenchmark](https://twitter.com/EdBenchmark)

